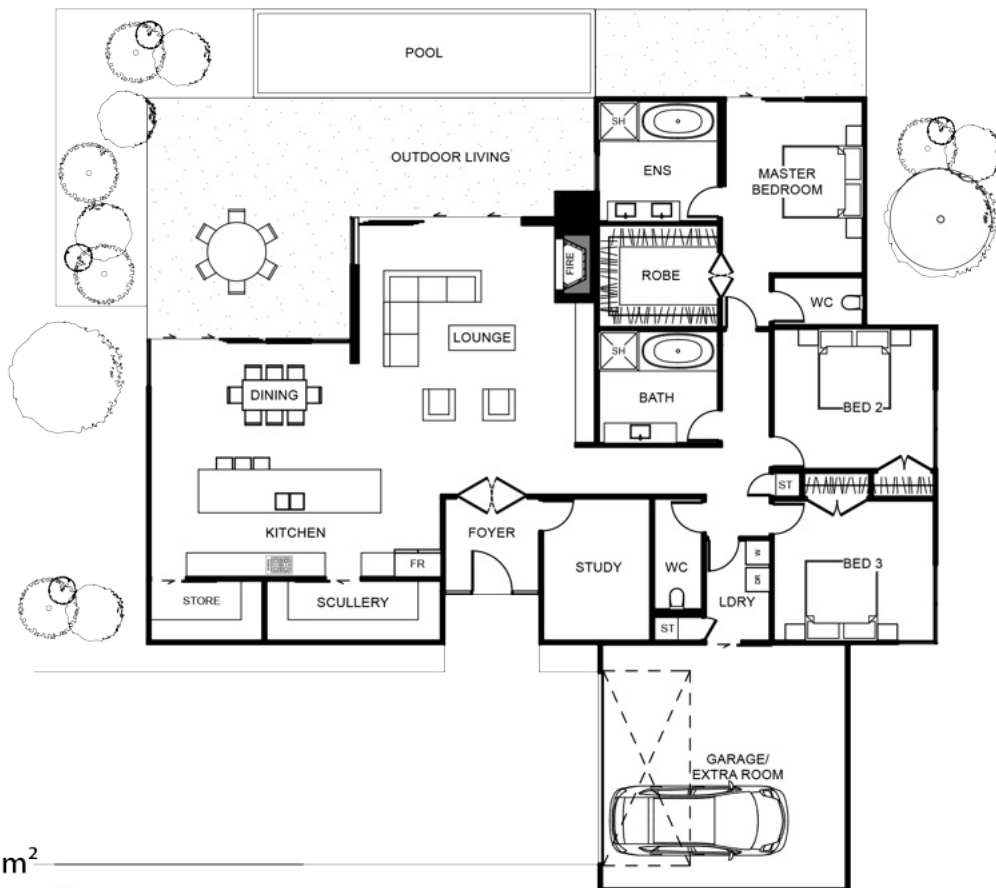


# Luca



When you first step into the private foyer of this three bedroom home it will instantly become a favourite. There is a private study perfectly located off the foyer right by the entrance. The bedrooms are all neatly arranged on one side of this home with living on the other. The Luca's open plan kitchen is complete with a scullery and a walk in pantry. The kitchen, dining and lounge flow through to the outdoor alfresco living space and the master bedroom comes complete with a large ensuite and the must have walk-in wardrobe. The Luca has everything you could ever need.



Floor Area: 246m<sup>2</sup>

2 3+ 2 19.7m 19.8m

Contact Dylan:  
M 027 2288 945  
E [dylon@lucidhomes.co.nz](mailto:dylon@lucidhomes.co.nz)  
[www.lucidhomes.co.nz](http://www.lucidhomes.co.nz)

