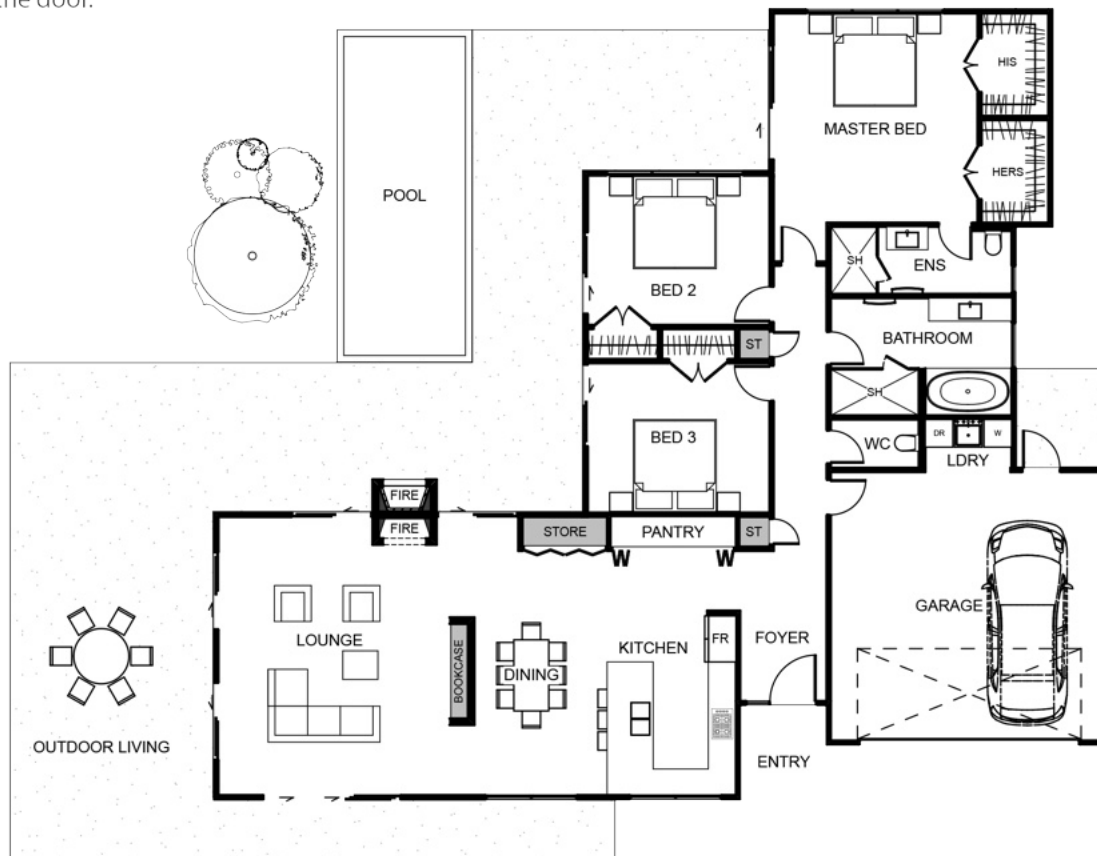







Rata



The Rata has been designed to build lasting family foundations. One side of this house is dedicated to the bedrooms and bathrooms allowing for a superb entertaining and gathering space on the other. The open-plan kitchen flows out onto a dining area with the lounge being separated by an inbuilt bookshelf. The lounge flows out to the outdoor living from all sides and the master bedroom has both a his and a her's walk in robe and an ensuite. You will want to settle into the Rata for life the moment you walk in the door.



Floor Area: 204m²

 2
  3
  2
  18.5m
  17.2m

Contact Dylan:
 M 027 2288 945
 E dylon@lucidhomes.co.nz
www.lucidhomes.co.nz



New Zealand
Certified
Builders
Association



LUCID
HOMES